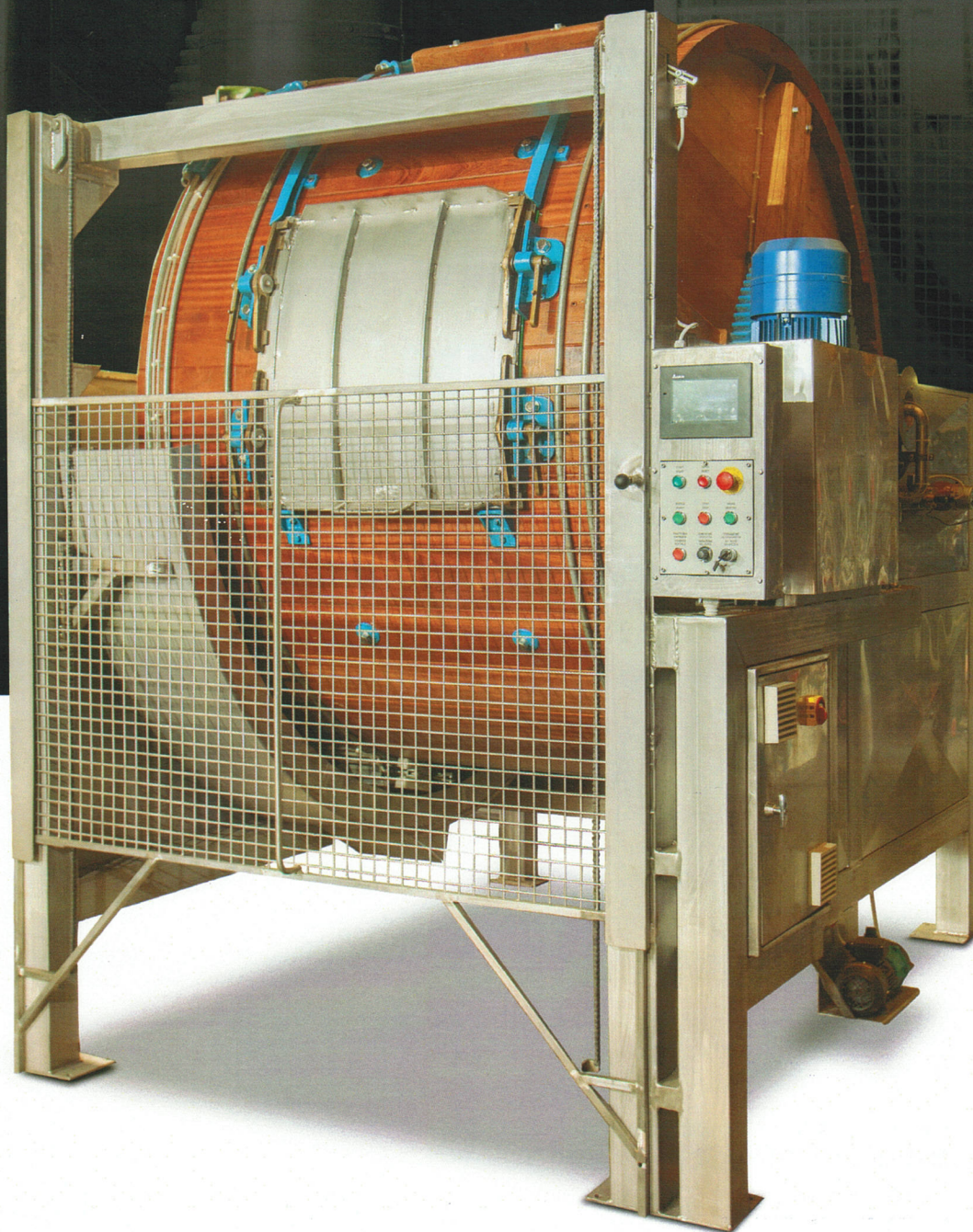
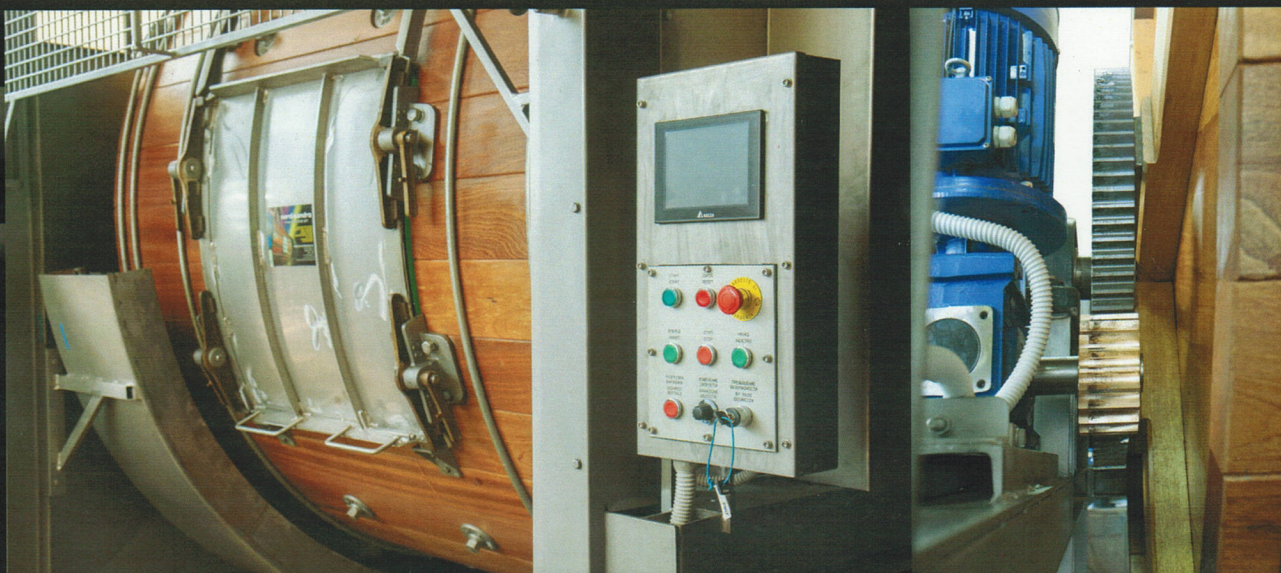




BOTTALE IN LEGNO DA TINTURA E RICONCIA
WOODEN DRUM FOR DYEING AND RETANNING
Барабан из дерева для крашения и додубливания





QUADRO ELETTRICO CON PANNELLO TOUCH SCREEN CHE COMANDA TUTTE LE FUNZIONI DEL BOTTALE E DEGLI ACCESSORI;

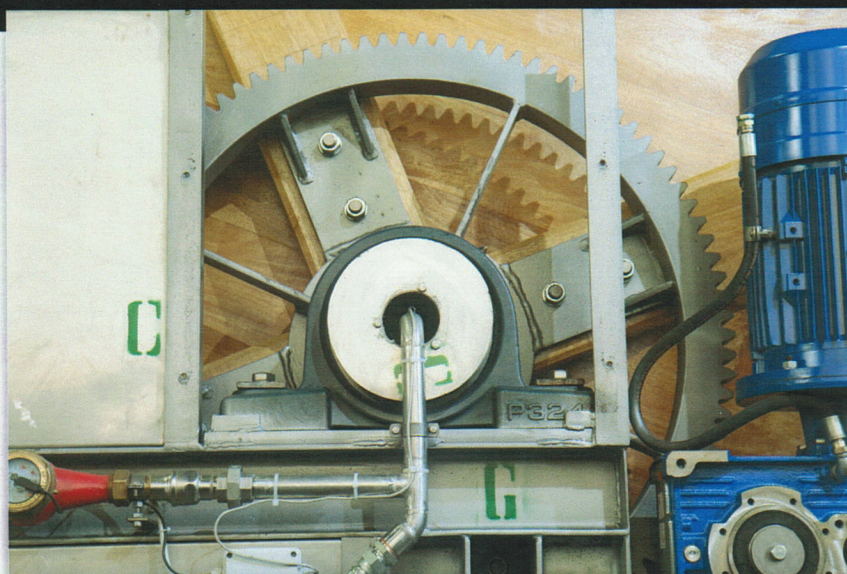
ELECTRIC CONTROL PANEL WITH TOUCHSCREEN FOR THE CONTROL OF ALL DRUM AND ACCESSORIES FUNCTIONS;

ЭЛЕКТРИЧЕСКАЯ ПАНЕЛЬ УПРАВЛЕНИЯ С СЕНСОРНЫМ ЭКРАНОМ УПРАВЛЯЕТ ВСЕМИ ФУНКЦИЯМИ БАРАБАНА И ВСЕМ ОБОРУДОВАНИЕМ

TRASMISSIONE AD INGRANAGGI CON RIDUTTORE A MONO BLOCCO FISSO;

GEAR DRIVE WITH FIXED MONOBLOC REDUCTION UNIT;

ЗУБЧАТЫЙ ПРИВОД С РЕДУКТОРОМ-МОНОБЛОКОМ ФИКСИРОВАННЫМ;



INGRESSO ACQUA CON CONTALITRI AD IMPULSI E SONDA INTERNA PER TEMPERATURA;

WATER INLET WITH PULSE LITRE COUNTER AND INTERNAL TEMPERATURE PROBE;

ТОЧКА ПОДАЧИ ВОДЫ СО СЧЕТЧИКОМ ЛИТРОВ ИМПУЛЬСНЫМ И ВНУТРЕННИМ ЗОНДОМ ДЛЯ ТЕМПЕРАТУРЫ;

DIMENSIONI:

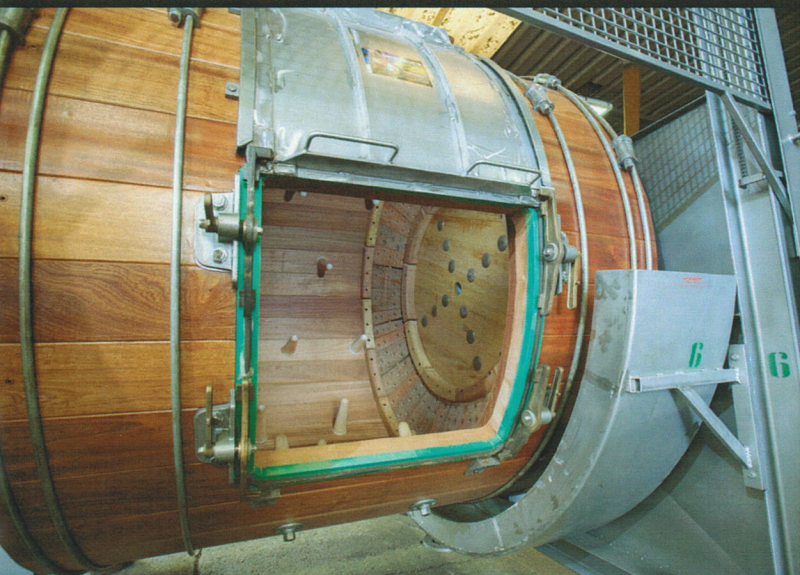
MINIME: DIAM. 1000X500mm
MASSIME: DIAM. 3200X2500mm

DIMENSIONS:

MINIMUM: DIAM. 1000X500mm
MAXIMUM: DIAM. 3200X2500mm

РАЗМЕРЫ:

МИНИМАЛЬНЫЕ: ДИАМ. 1000X500мм
МАКСИМАЛЬНЫЕ: ДИАМ. 3200X2500мм



PIOLI IN NYLON O PALE IN LEGNO ALL'INTERNO;
 NYLON PEGS OR WOODEN BLADES INSIDE;
 ПЕРЕКЛАДИНЫ ИЗ НЕЙЛОНА ИЛИ ЛОПАТКИ ИЗ ДЕРЕВА ВНУТРИ;



CANALETTA IN ACCIAIO INOX PER LO SCARICO ACQUA DAL BOTTALE;
 STAINLESS STEEL RACEWAY FOR DRAINAGE OF WATER FROM DRUM;
 СТОК ВОДЫ ИЗ БАРАБАНА ИЗ НЕРЖАВЕЮЩЕЙ СТАЛИ;



CANALETTA IN ACCIAIO INOX PER LO SCARICO ACQUA DAL BOTTALE;

STAINLESS STEEL PRODUCT MIXING TANK AND PUMP FOR INJECTION OF PRODUCTS INTO DRUM;

БАЧОК ИЗ НЕРЖАВЕЮЩЕЙ СТАЛИ ДЛЯ СМЕШИВАНИЯ ПРОДУКТОВ И НАСОС ДЛЯ ВЫПУСКА ПРОДУКТОВ В БАРАБАН;



SUPPORTO IN FERRO O IN ACCIAIO INOX PORTA BOTTALE;

LAVAGGIO DI SCARICO IN NYLON CON NR. 2 VALVOLE IN NYLON;

MOTORE CHE LAVORA CON INVERTER E POSSONO VARIARE I GIRI DA 2 A 18;

QUESTI BOTTALI NON NECESSITANO D'INSTALLAZIONE DEVONO SOLO ESSERE ALLACCIATI ALLA CORRENTE ED ALLA TUBAZIONE DELL'ACQUA.

DRUM-HOLDER SUPPORT IN IRON OR STAINLESS STEEL;

NYLON DRAINING WASHING SYSTEM WITH NO. 2 NYLON VALVES;

MOTOR WORKS WITH INVERTER; RPM CAN BE CHANGED FROM 2 TO 18;

THESE DRUMS DO NOT REQUIRE INSTALLATION AND MUST ONLY BE CONNECTED TO ELECTRIC POWER AND WATER PIPING.

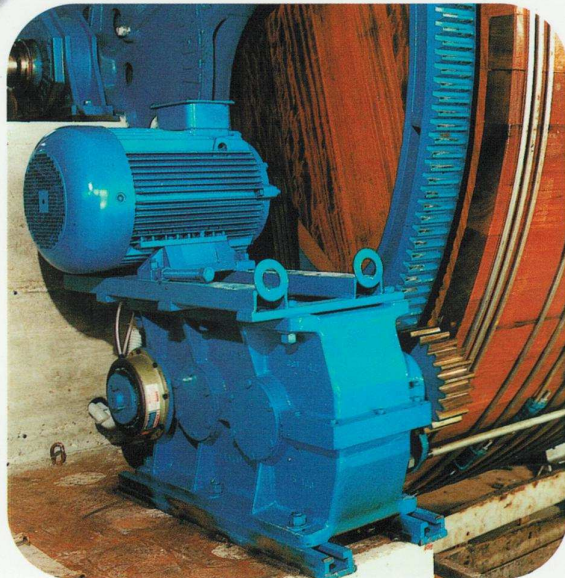
СУППОРТ ИЗ ЖЕЛЕЗА ИЛИ НЕРЖАВЕЮЩЕЙ СТАЛИ ДВЕРЬ БАРАБАНА;

ВЫПУСКНОЙ СМЫВ ИЗ НЕЙЛОНА С 2 КЛАПАНАМИ ИЗ НЕЙЛОНА;

ДВИГАТЕЛЬ РАБОТАЕТ С ИНВЕРТОРОМ И ВОЗМОЖНО ИЗМЕНЯТЬ ОБОРОТЫ ОТ 2 ДО 18;

ЭТИ БАРАБАНЫ НЕ НУЖДАЮТСЯ В УСТАНОВКЕ, ДОЛЖНЫ БЫТЬ ТОЛЬКО ПОДКЛЮЧЕНЫ К ИСТОЧНИКУ ТОКА И ТРУБОПРОВОДУ ВОДЫ.

NARDI SANDRO INTERNATIONAL SRL



- Bottale per calcinaio e concia con strutture extra pesanti in ferro fuso.
- Crociera \varnothing 4000 mm a 6 braccia dentata.
Stessa crociera a 6 braccia liscia con mozzo da \varnothing 240 mm.
- I supporti sono sia su cuscinetti sia su bronzine oscillanti.
- Monta riduttore 75/100 con albero porta pignone da mm. 110.
- La porta spia e la porta di servizio sono in acciaio inox, scorrevoli lateralmente.
- Struttura interna: intercapedine interno per la fuoriuscita dell'acqua dal baricentro dove viene pulita e reintrodotta dalla parte opposta del mozzo.
- I lavaggi di scarico e i pioli per le valvole sono in nylon.



- *Drum for lime pit and tannage with extra heavy ingot-iron frames*
- *\varnothing 4000 mm. spider with 6 toothed arms. The same spider with 6 plain arms with \varnothing 240 mm. hub. The supports are placed on bearings and on swinging bushings.*
- *It is equipped with a 75/100 reduction gear with a \varnothing 110 mm. pinion-holding shaft.*
- *The inspection door and the access door are made of stainless steel and they slide sideways.*
- *The inside structure is made of steel: the water is discharged from the center of gravity where it is cleaned and it is run into the opposite part of the hub.*
- *The bottom structure with holes, the stakes and the valves are made of nylon.*



- Tonneau pour gravats et tannage avec des structures particulièrement lourdes en fer fondu.
- Croisillon cranté \varnothing 4000 mm à 6 bras
Même croisillon à 6 bras lisse avec moyeu de \varnothing 240 mm.
- Les supports sont soit sur des coussinets soit sur des coussinets en bronze oscillants.
- Il est équipé d'un réducteur 75/100 avec un arbre porte pignon de 110 mm.
- La porte pour le contrôle des opérations et la porte de service sont en acier inoxydable et coulissantes latéralement.
- Structure interne: couche interne pour la sortie de l'eau du barycentre où cette dernière est nettoyée et réintroduite du côté opposé au moyeu.
- Les dispositifs de lavage pour l'évacuation de l'eau, les barreaux et les valves sont en Nylon.



DATI E CARATTERISTICHE DEI BOTTALI

DONNÉES ET CARACTÉRISTIQUES DES TONNEAUX

DATA AND CHARACTERISTICS OF DRUMS

DIMENSIONI			PORTA	CARATTERISTICHE TECNICHE								
DIMENSIONS			PORTE	CARACTÉRISTIQUES TECHNIQUES								
DIMENSIONS			DOOR	TECHNICAL CHARACTERISTICS								
D x L (mm)	A (mm)	B (mm)	C x H (mm)	CAPACITÀ TOT. (lit.)	CAPACITÉ TOT. (lit.)	TOTAL CAPACITY (lit.)	POTENZA MAX (HP)			VELOCITÀ (giri /min)		
							PUISSANCE MAX (HP)			VITESSE (tours /min)		
							MAX POWER (HP)			SPEED (rpm)		
							CALCE	CONCIA	TINTURA	CALCE	CONCIA	TINTURA
							CHAUX	TANNAGE	TEINTURE	CHAUX	TANNAGE	TEINTURE
							LIME	TANNING	DYEING	LIME	TANNING	DYEING

4000 x 4000	6330	4480	1200 x 1200	42160	40	50	/	1,5 - 3	2,5 - 5	/
4000 x 4500	6830	4480	1200 x 1200	47920	40	50	/	1,5 - 3	2,5 - 5	/
4200 x 4200	6530	4580	1200 x 1200	49230	40	50	/	1,2 - 2,4	2 - 4	/
4200 x 4500	6830	4580	1200 x 1200	53060	40	50	/	1,2 - 2,4	2 - 4	/
4500 x 4500	6830	4730	1200 x 1200	61250	40	60	/	1,2 - 2,4	2 - 4	/
4500 x 5000	7330	4730	1200 x 1200	68620	40	60	/	1,2 - 2,4	2 - 4	/

CARICO AL 50% DELLA CAPACITÀ						CARICO AL 75% DELLA CAPACITÀ										
CHARGÉ À 50% DE SA CAPACITÉ						CHARGÉ À 75% DE SA CAPACITÉ										
LOADED TO 50% OF ITS CAPACITY						LOADED TO 75% OF ITS CAPACITY										
CAPACITÀ AL 50% (lit)	CAPACITÉ DE 50% (lit)	CAPACITY TO 50% (lit)	RAPPORTO BAGNO / TAUX BAIN FLOAT RATIO					CAPACITÀ AL 75% (lit)	CAPACITÉ DE 75% (lit)	CAPACITY TO 75% (lit)	RAPPORTO BAGNO / TAUX BAIN FLOAT RATIO					
			100%	150%	200%	250%	300%				100%	150%	200%	250%	300%	
			PELLI (Kg)	PELLI (Kg)	PELLI (Kg)	PELLI (Kg)	PELLI (Kg)				PELLI (Kg)	PELLI (Kg)	PELLI (Kg)	PELLI (Kg)	PELLI (Kg)	PELLI (Kg)
			PEAUX (Kg)	PEAUX (Kg)	PEAUX (Kg)	PEAUX (Kg)	PEAUX (Kg)				PEAUX (Kg)	PEAUX (Kg)	PEAUX (Kg)	PEAUX (Kg)	PEAUX (Kg)	PEAUX (Kg)
			SKINS (Kg)	SKINS (Kg)	SKINS (Kg)	SKINS (Kg)	SKINS (Kg)				SKINS (Kg)	SKINS (Kg)	SKINS (Kg)	SKINS (Kg)	SKINS (Kg)	SKINS (Kg)

20380	10190	8152	6793	5780	5095	31620	15810	12648	10540	9034	7905
23160	11580	9264	7720	6617	5790	35940	17970	14376	11980	10268	8985
23840	11920	9536	7946	6811	5960	36922	18461	14768	12307	10549	9230
25690	12845	10276	8563	7340	6422	39795	19897	15918	13265	11370	9949
29720	14860	11888	9906	8492	7430	45937	22968	18375	15312	13124	11484
33310	16655	13284	11103	9517	8327	51465	25732	20586	17155	14704	12866

NARDI SANDRO

COSTRUZIONI E MANUTENZIONE MACCHINE PER CONCIERIE